



Pastures For The Wet Tropics



Mekong Brizantha™



Mekong Brizantha™ is a robust Brachiaria, growing up to 120cm high, with stout erect stems and broad leaves. It grows on a wide range of soil types, tolerating acidic conditions in rainfall zones above 1000mm. Current indications show that Mekong will tolerate considerably more water logging than Signal Grass, but less than Humidicola. Under well fertilized conditions, pure stands can withstand heavy stocking rates for extended periods of time. It is thought the establishment time can be similar to humidicola.

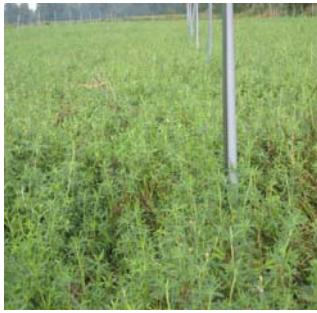


Cardillo Centro

Cardillo Centro is a long term perennial pasture legume that has the capability to compete with such grasses as Signal Grass and Humidicola. Its low growth habit allows it to root down at its nodes, making it tolerant to heavy grazing.

Stylhay™

Protein, Palatable, Persistent are three words to describe Stylhay™. Under tropical coastal conditions, it cannot be beaten for its feed quality, its ability to regenerate and the amount of nitrogen it fixes to the soil to supplement companion grass species. It is tolerant to acid soils with high Aluminium levels but is affected by salinity.



Jarra Grass

Jarra Grass is a perfect dual purpose grazing / hay pasture species. Its soft leaf and stem, makes it extremely palatable to all stock. In mixed pastures, it can be preferentially grazed out. Strict grazing management is essential.

Bolton 495™ Pinto Peanut

Bolton 495™ Pinto Peanut is a released cultivar from Southedge Seeds. Bolton 495™ shows itself to be a robust plant, with excellent drought tolerance and quick responsiveness to defoliation. Bolton 495™ has a strong perennial tendency, and will compete with most tropical grass species quite effectively.



Narok Setaria

Narok Setaria is a palatable and productive tufted grass that will grow nearly 12 months of the year. When compared with other Setaria cultivars, Narok has far superior digestibility, and has been widely recognized as an excellent milk producing grass. Some management is required to manage low calcium levels typical of Setaria pasture which can cause side effects.

Rhodes Grass

Both Callide and Katambora Rhodes grass are well suited to tropical coastal pastures. Callide can handle some water logging and requires reasonable soil nutrition to persist. Whilst, Katambora is known to be a more hardier cultivar.

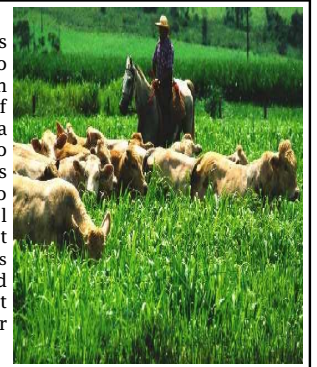


Villomix

Villomix is best described as an excellent pioneer legume species, fixing reasonable levels of nitrogen in the first season. Tolerating heavy grazing, Villomix has high protein and excellent digestibility ensuring good weight gains and milk yields.

Guinea Grass

Guinea Grass is the grass that cane farmers love to hate and graziers just plain love. The amount of kilos of beef produced off Guinea each year is comparable to any other tropical grass. Its soft leaf, and high leaf to stem ratio makes it a well accepted pasture grass. It responds well to applications of nitrogen fertilizer and heavy grazing. It will not tolerate periods of water logging or heavy frosts.



Signal Grass

Quite possibly the most widely planted tropical pasture grass in the world, Signal Grass is known for its hardiness and durability across a wide range of growing conditions. Brachiaria as it is commonly known, is highly competitive and has the tendency to smother out many pasture weeds and sucker regrowth.



Humidicola

The ideal grass for the high rainfall zones where water logging is a continuous issue. Humidicola, like Signal Grass will out compete most weeds and suckers. In order to gain maximum production from Humidicola pasture, annual fertiliser applications are recommended, along with strict management. Crash grazing or slashing will prevent the grass from souring.



Alto Panicum

Alto Panicum is a new release tropical pasture grass by Southedge Seeds. It is a tufted species that grows up to 180cm high, with stout stems and extremely broad leaves. Originally from Brazil, it has a reputation for its sheer ability to produce high levels of matter. Its high leaf to stem ratio, enables Alto to have relatively low fibre levels in comparison to other tropical grasses of similar height.



Southedge Seeds Pty. Ltd.

24 Tinaroo Creek Road, Mareeba, QLD, 4880

Ph:- (07) 4086 2400

Fax:- (07) 4092 2345

Website:- www.southedgeseeds.com.au